

Examples of International Agency for Research on Cancer (IARC) Carcinogenic Classifications



Hair coloring products



Insulation glass wool



Magnetic fields



Caffeine/Tea



Fluorescent lighting



Caprolactam

Note: Of the hundreds of agents IARC has reviewed, this chemical, primarily used in the manufacturing of synthetic fibers, especially nylon, is the ONLY item IARC has ever placed in this category.³



Coffee



Pickled vegetables (traditional in Asia)



Talc-based body powder



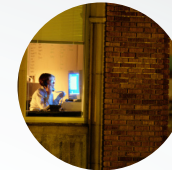
Aloe vera



Carpentry



Working as a barber/hair dresser



Nightshift Work



Art glass, glass containers and pressed ware (manufacture of)



High temperature frying



Glyphosate



Tobacco



Wood dust



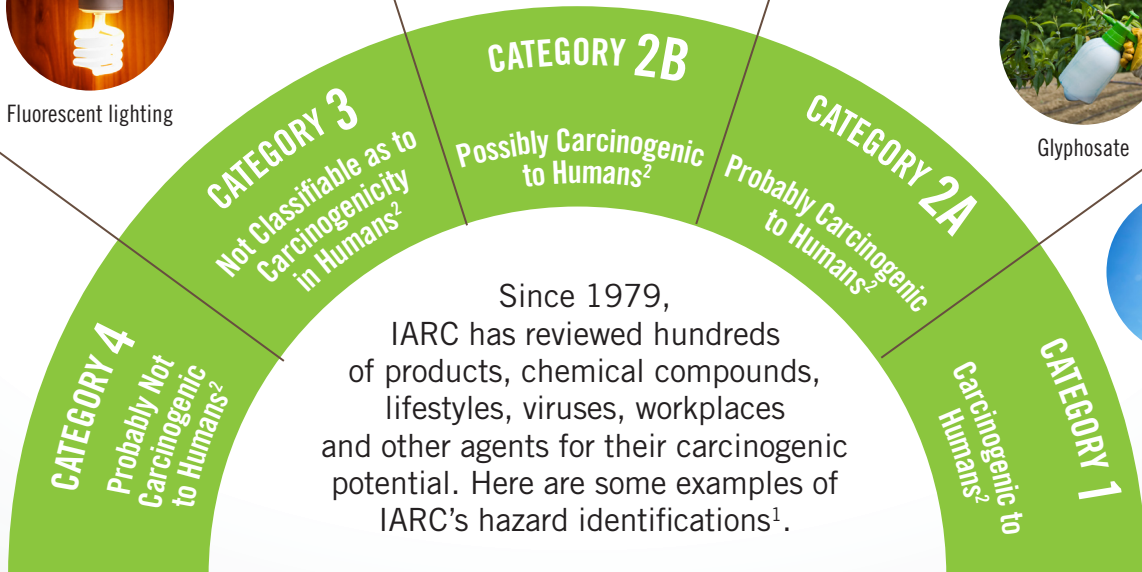
Sunlight



Outdoor air pollution



Alcoholic beverages



¹ <http://www.24d.reviews/IARC-and-24D.php>

² <http://monographs.iarc.fr/ENG/Classification/ClassificationsAlphaOrder.pdf>

³ <http://www.epa.gov/ttnatw01/hlthef/caprolac.html>